

QUIETER  
SPACES.  
INCREASED  
COMFORT.

**Stramit** 

**RES-EASE<sup>®</sup>  
FIXING CLIPS FOR  
SPEED DECK ULTRA<sup>®</sup>**

RESIDENTIAL LOW-PITCH ROOFING SYSTEM SOLUTION

A residential roofing system innovation  
designed for rapid installation, lasting  
strength and thermal noise reduction.



[stramit.com.au](https://stramit.com.au)



**Part of  
Fletcher  
Building**

# CLIP. CLICK. DONE.

RES-EASE® Fixing Clips for Speed Deck Ultra® makes installation faster and simpler.

## RES-EASE® FIXING CLIPS FOR SPEED DECK ULTRA®

- ✓ **QUICK CLIPPING ARRANGEMENT**  
RES-EASE® Clips make installation faster and simpler.
- ✓ **LESS WASTE**  
Full width RES-EASE® clip covers one sheet.
- ✓ **ENGINEERING GRADE POLYMERS**  
No risk of clip corrosion.
- ✓ **PEACE OF MIND FOR HOME OWNERS**  
Reduce thermal noise for a quieter, comfortable home.
- ✓ **SUITABLE FOR A RANGE OF RESIDENTIAL ROOFING**  
Ideal for low slope roofs as low as 1°.
- ✓ **INSTALL WITH CONFIDENCE**  
Engineered strength, BAL 12.5 compliance and N4r wind rating.



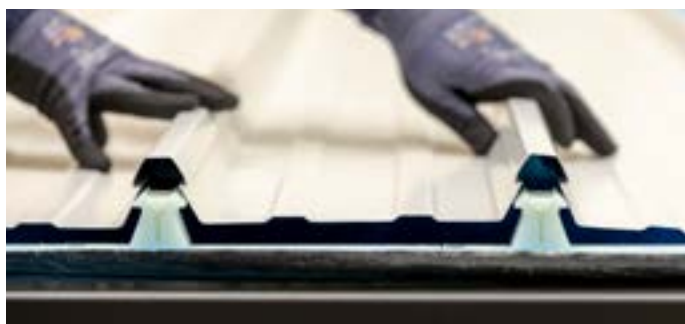
### WHY RES-EASE® SPEED DECK ULTRA® RESIDENTIAL LOW-PITCH ROOFING SYSTEM SOLUTION IS THE SMART CHOICE?

RES-EASE® fixing clips for Speed Deck Ultra® combine the ease of installation with long-term performance. The system is designed to significantly reduce the effects, from thermal shifts in the connected sheet, that cause clicking or creaking, offering peace of mind to homeowners and installers alike.

Installation is both faster and simpler due to a full-width clip that securely holds the sheet, and hex-head screws that ensure a strong, efficient connection. RES-EASE® fixing clips are developed from a corrosion-resistant, engineering-grade polymer, eliminating the risk of rust in the clips and enhancing durability in harsh weather environments.



Centralised fastening points for better strength



Precision tolerance fixing clips for increased strength and rigidity

Interested in RES-EASE® low-pitch roofing system solution for your next project?  
Reach out to your Account Manager, today.

The information in this document is to be read in conjunction with the Product Technical Manual, available on the Stramit website.  
© 2025 Stramit Corporation Pty Limited ABN 57 005 010 195. A member of the Fletcher Building Group. RES-EASE®, Speed Deck Ultra® and use of ™ and ® indicates trade marks of Stramit Corporation Pty Limited. This document replaces all previous issues.  
Please destroy, or clearly mark as superseded, all previous issues. STR131\_JUNE25.



Scan to  
learn more

**HARD** \ **REAL**  
**STEEL** **PEOPLE**

 [stramit.com.au](https://stramit.com.au)

**Stramit** 